



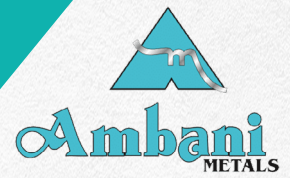
Ambani
METALS

RELIABLE FOUNDATION, REMARKABLE FUTURES!

STEEL RAW MATERIAL ESSENTIALS

CRAFTED FOR PERFORMANCE,
STOCKED FOR SUCCESS!

RELIABLE FOUNDATION, REMARKABLE FUTURES.



More Than Two Decades of Unrivalled Expertise

For over 25 years, Ambani Metals has set the industry standard as the go-to provider for cutting-edge steel raw materials. With an unwavering commitment to excellence, we have become the trusted gateway to an extensive range of high-quality steel products, offering a bespoke solution to meet the dynamic demands of various industries.

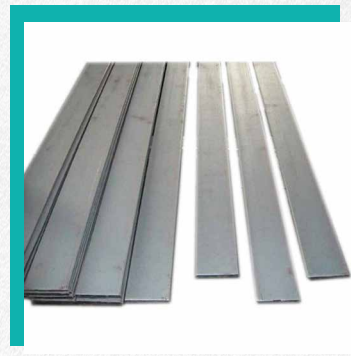
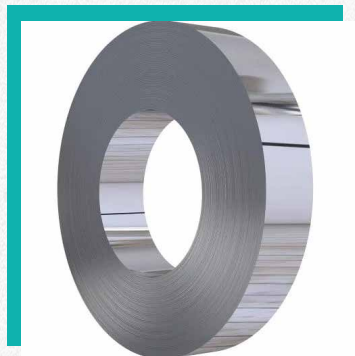
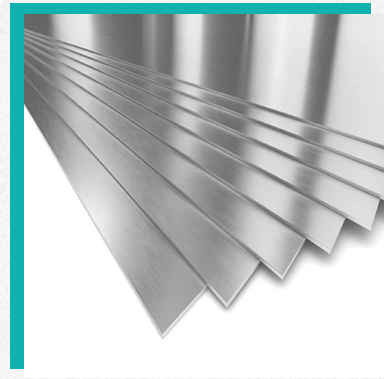
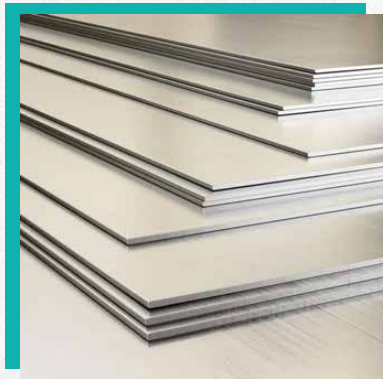
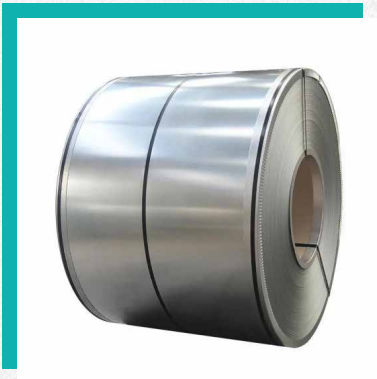
Diversified Raw Material Stock

Sheet, Plate, Coil, and Strips

Thickness Range: From an ultra-fine 0.1 mm in strip coils to robust 32 mm thick heavy-duty plates

Grades: Encompassing SS 304/L, SS 316/L, SS 321, Titanium, Duplex, and Super Duplex, Hastelloy, Inconel, and Monel

Our stock reflects a comprehensive selection catering to applications requiring precise strip coils for intricate projects to heavy-duty plates for industrial behemoths. We guarantee use of prime material of utmost quality for all our stock.

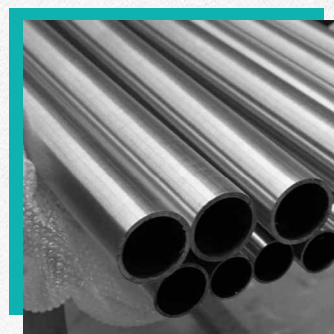


Pipes and Tubes

Variety: We offer an extensive range, including Welded, Seamless, Fabricated and Semi-welded pipes

Grades: Covering SS 304/L, SS 316/L, Titanium, Monel, Inconel, Duplex, Super Duplex, Hastelloy, Inconel, and Monel

Our diverse inventory ensures suitability for applications ranging from high-pressure industrial processes to precision engineering. From robust 3/4" pipes to expansive 16" tubes, our diverse range of steel raw materials ensures precision and reliability for every project. We provide matte/mirror or silver finish as per customer's request.



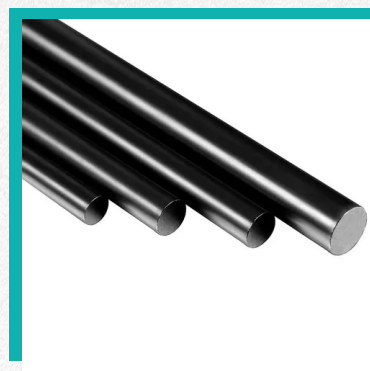
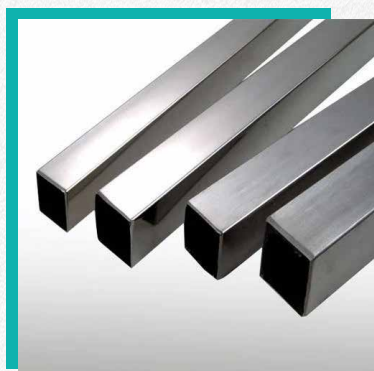
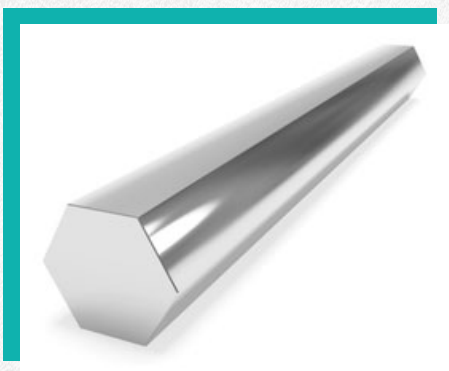
SS Round Bars

Options: Stock includes both Black Bars and Bright Bars

Grades: Encompassing SS 304/L, SS 316/L, Titanium, Monel, Inconel, Duplex, Super Duplex, Hastelloy, Inconel, and Monel

Range: Round, Square, Hexagon, Flat and Hollow Bars

Tailored to meet the requirements of precision machining and structural applications.



RELIABLE FOUNDATION, REMARKABLE FUTURES.



Impressive Ready Stock

Quantity: An extensive **4000+ tonnes of raw material** ready for immediate dispatch

Suppliers: Sourced from reputable Indian manufacturers such as Jindal and Tata Steel, and globally acclaimed suppliers including Posco, Sumitomo, Outokumpu, Yusco, Aperam, and others



Technical Excellence and Quality Assurance

Testing Protocols: Rigorous quality checks include Positive Material Identification (PMI), Ultrasonic, Spectro Test and a myriad of metallurgical examinations.

Material Certification: Ensuring compliance with international standards and customer specifications.



Thank you for considering Ambani Metals for your mass transfer solution needs. With our dedication to quality, innovation, and customer satisfaction, we are confident in our ability to exceed your expectations. Whether you're seeking cutting-edge products, expert engineering support, or reliable logistics services, we are here to serve you.

Contact us today to discuss how we can meet your steel needs efficiently and effectively. You can navigate our comprehensive stock and experience the Ambani Metals advantage at <https://www.ambanimetal.com/>. Partner with us for a seamless supply chain of advanced steel raw materials tailored to your exact technical specifications.



Head Office

Office no. 2, 2nd floor, Nebula Tower, Sindhi Lane, Mumbai - 40004, Maharashtra, India.



Contact Person

Jay Shah - Domestic Division - +91 83692000178
Manan Bokadia - Export Division - +91 9930498865



Email

sales@ambanimetal.com
export@ambanimetal.com



Website

<http://www.ambanimetal.com>